

150*150mm
骑马钉

正面

①

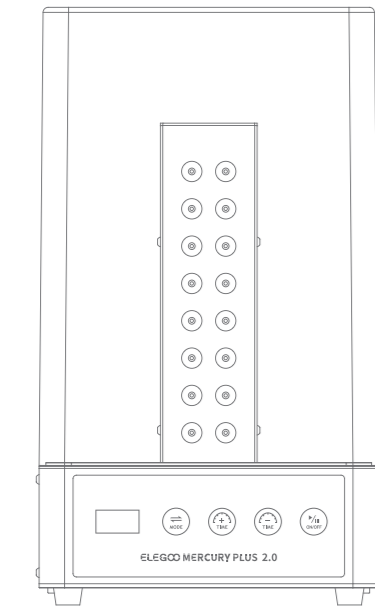
②

③

④

⑤

⑥



ELEGOO MERCURY PLUS 2.0

Operation Manual for
ELEGOO MERCURY PLUS 2.0 Wash & Cure Machine
ELEGOO

Thank you

for purchasing ELEGOO MERCURY PLUS 2.0 Wash & Cure Machine.
Please unbox and inspect the machine upon receiving it.
If you have any questions regarding the machine,
Please contact us at 3dp@elegoo.com facebook and ins.

Please read the instruction carefully before you use the machine.

Multiple language instructions and software are available
to download from www.elegoo.com/download.



Notice:

Please always keep in mind the precautions when using the ELEGOO MERCURY PLUS 2.0 Wash & Cure Machine. Failure to comply with these precautions may cause the damages to the machine or even cause individual injury.

- Please contact our customer service first to arrange replacement if any parts are found damaged or missing after receiving the products.
- It is forbidden to put the model directly into the cleaning bucket for cleaning, please put the model in the cleaning basket for cleaning, and according to the size of the model you can choose to clean it with or without the platform.
- Please follow the safety regulations to use and store the washing liquid (which could be ethyl alcohol or isopropanol) properly. The washing liquid should not exceed the maximum height of the cleaning bucket, otherwise, the washing liquid may overflow and cause damage to the machine. Please seal the cleaning bucket with the lid when using and after using.
- Please wash and dry the model first before curing, otherwise, the model would be covered with some white residues, sticky or cracked.
- Do not take away the lid from the machine when curing mode is on as to prevent potential hazards from the UV lights.
- After long-hour use in the curing mode, it is normal that the temperature of the machine body and the cover will rise.
- Please adjust the curing time appropriately if the model turns yellow after curing. Over curing will lead to the model's yellowing.
- ELEGOO MERCURY PLUS 2.0 Wash & Cure Machine is designed to be used within ambient temperature ranging from 0°C to 40°C, and humidity ranging from 20% to 50%.
- Do not disassemble the ELEGOO MERCURY PLUS 2.0 Wash & Cure Machine without consulting. Please contact ELEGOO customer service: 3dp@elegoo.com if you have any problems.

Technical Specification:

Machine Name: ELEGOO MERCURY PLUS 2.0 Wash & Cure Machine
Control Method: Touch button

Rated Power: 40W

Input Voltage: 100V-240V 50/60Hz

UV Light: 405nm (8+8)

Time Setting: 0-30mins

Machine Size: 200mm*200mm*352mm

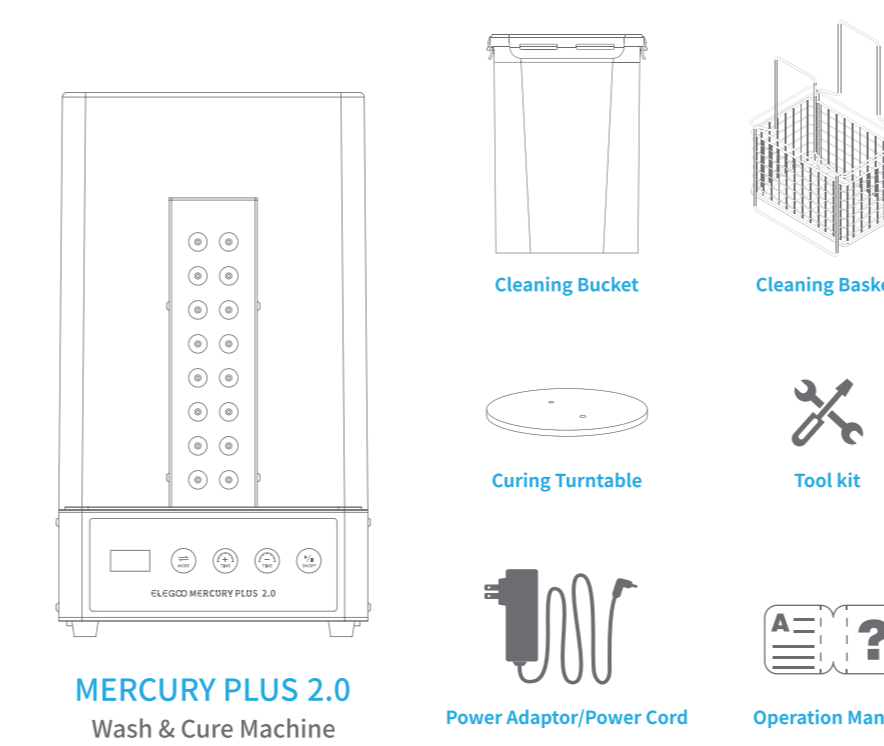
Maximum Wash Volume: 124mm*90mm*110mm (With build platform)
131mm*90mm*220mm (Without build platform)

Maximum Curing Size: φ140*165mm

Machine Net Weight: 3.8kg

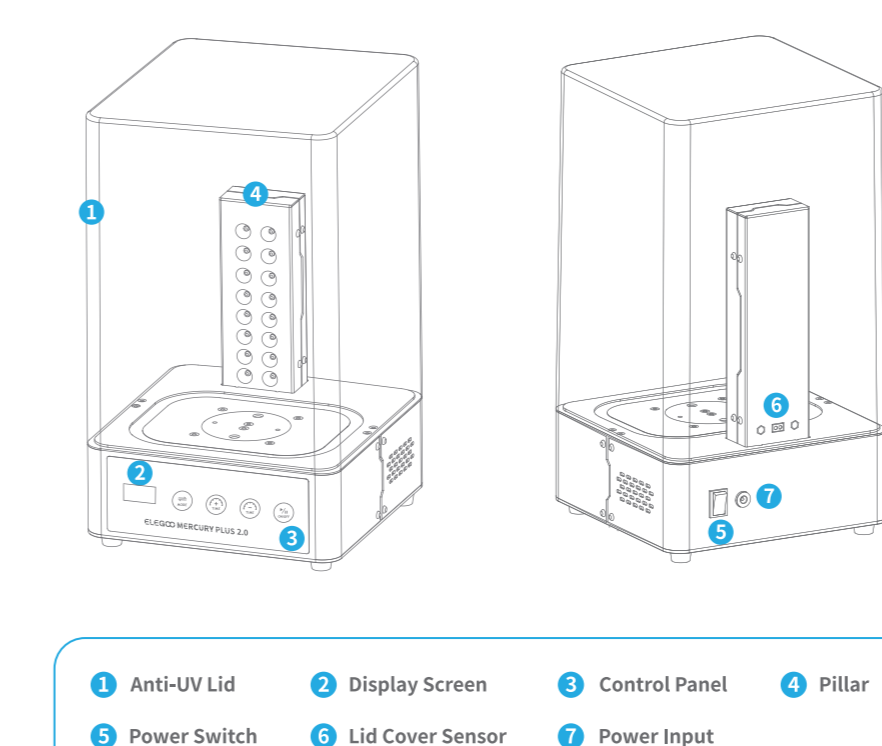
Curing Time Setting: For model with diameter less than 30 mm, the curing time is recommended to be 2 minutes. If the structure of the model is complex, it is recommended to increase the curing time properly.

Product Overview



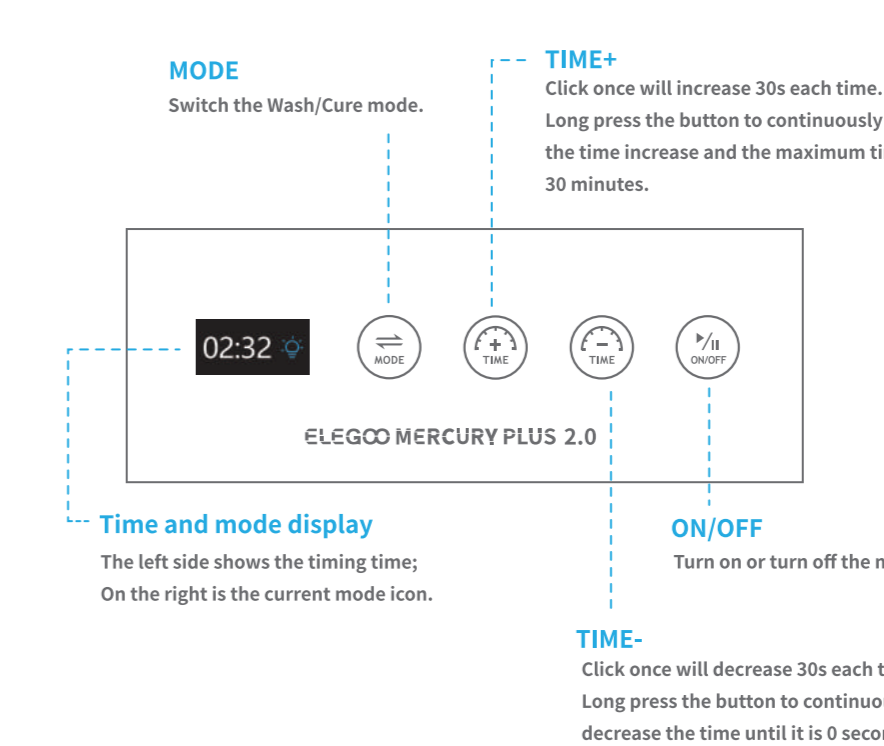
MERCURY PLUS 2.0
Wash & Cure Machine

Product Overview



1 Anti-UV Lid 2 Display Screen 3 Control Panel 4 Pillar
5 Power Switch 6 Lid Cover Sensor 7 Power Input

Product Overview



MODE Switch the Wash/Cure mode.
TIME+ Click once will increase 30s each time. Long press the button to continuously get the time increase and the maximum time is 30 minutes.
TIME- Click once will decrease 30s each time. Long press the button to continuously decrease the time until it is 0 seconds.
ON/OFF Turn on or turn off the machine.
Time and mode display The left side shows the timing time; On the right is the current mode icon.

封面

⑦

⑧

⑨

⑩

⑪

⑫

⑬

(13页与背面为一页)

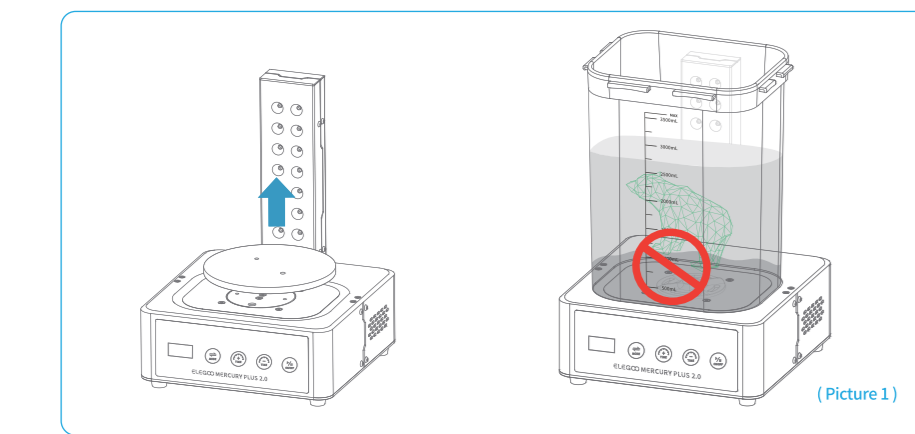
Operation Instruction

ELEGOO MERCURY PLUS 2.0 Wash & Cure Machine has two working modes, wash mode and cure mode. Please plug in the power and turn on the machine before use.

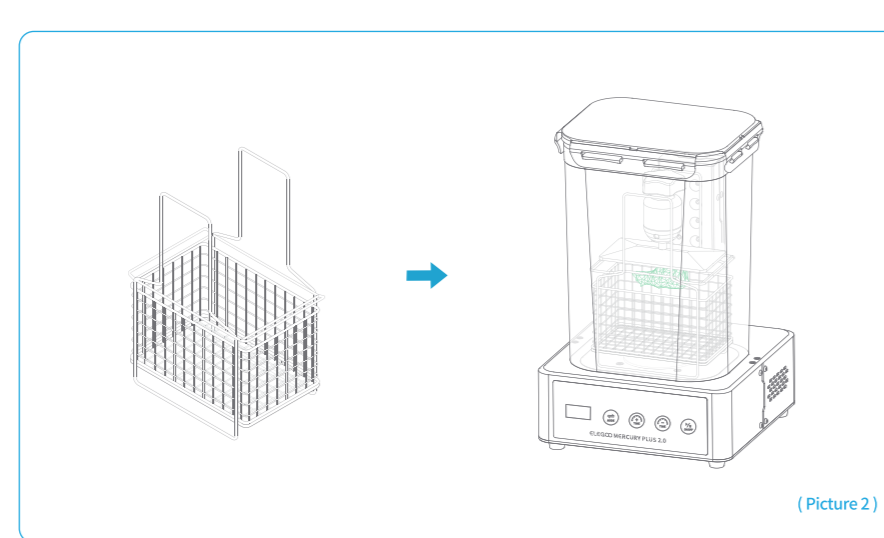
4.1 Wash Mode

4.1.1. Switch the machine to "Wash Mode" by touching the "MODE" on the panel, at this time the display mode icon shows:

4.1.2. Please submerge the model in a suitable way in the washing liquid of the cleaning bucket. (It is forbidden to put the model directly into the cleaning bucket for cleaning, otherwise, the model and the parts of the cleaning bucket will be damaged.) (See Picture 1)



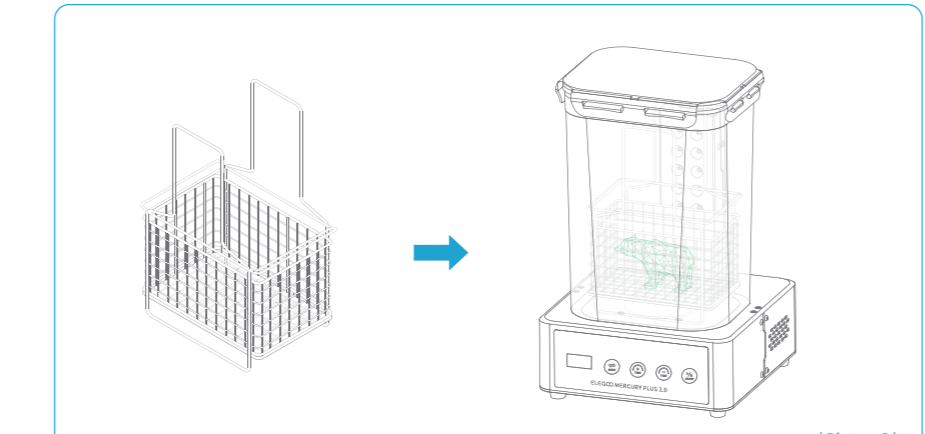
Operation Instruction



a. When the model is within the size of 124mm*90mm*110mm, you can wash the model with build platform, remove the lid of the cleaning bucket, put the cleaning basket into the cleaning bucket, and then place the model with platform upon the bracket. (Be careful not to bump the model during placement.) and then pour the appropriate amount of washing liquid. (The washing liquid should cover the platform and not beyond the 3000ml scale line.) into the cleaning bucket and finally seal the lid. (See Picture 2)

Operation Instruction

b. When the model is out of the size of 124mm*90mm*110mm, then you should clean the model without build platform. Please remove the lid of the cleaning bucket first, put the cleaning basket into the cleaning bucket and then pour the appropriate amount of washing liquid into the cleaning bucket and finally seal the lid. (See Picture 3)



4.1.3. No need to cover with anti-UV lid. Touch "TIME+" or "TIME-" to set the washing time. After that, touch "ON/OFF" to start cleaning the model.

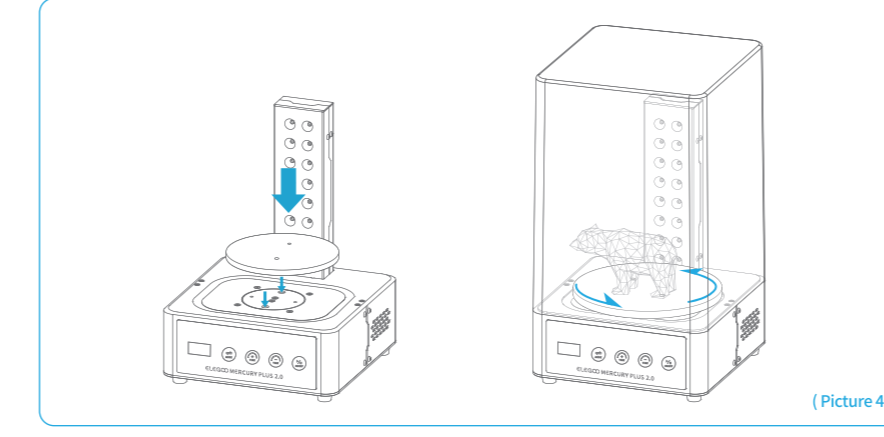
4.1.4. The machine will beep when the cleaning is done. Please remove the model for air drying. After cleaning, remove the cleaning bucket and seal it with lid (washing liquid can be used multiple times). If washing liquid spills onto the machine, please clean it up quickly to avoid a short circuit caused by washing liquid flowing into the machine.

Operation Instruction

4.2 Cure Mode

4.2.1. Switch the machine to "Cure Mode" by touching the "MODE" on the panel, at this time the display mode icon shows:

4.2.2. Place the curing turntable firmly against the turntable positioning hole in the center of the machine platform (please remove the cleaning bucket beforehand). (See Picture 4)



4.2.3. Place the model on the center of the curing turntable.

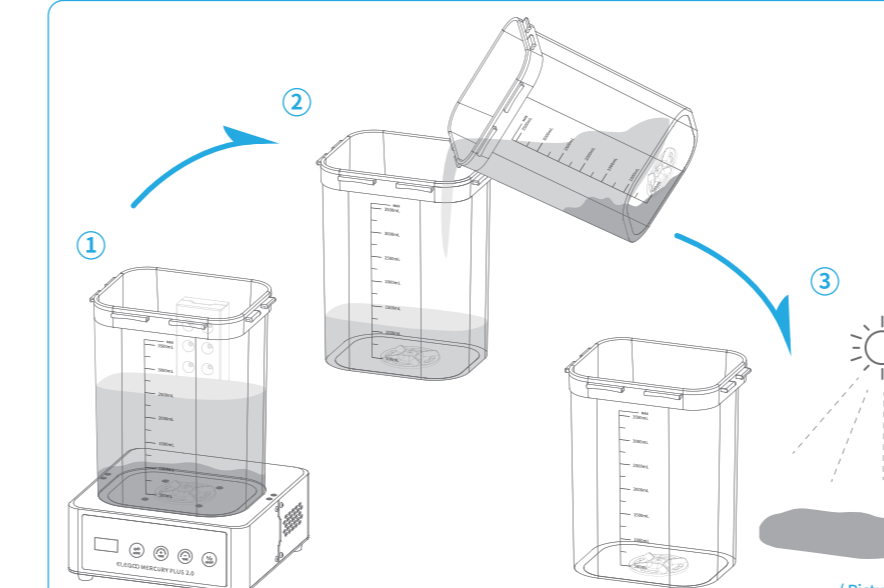
4.2.4. Then cover the anti-UV lid. Touch "TIME+" or "TIME-" to set the curing time. After that, touch "ON/OFF" to start curing the model. It is normal that there is a slight jitter due to the slow speed of the turntable.

4.2.5. The machine will beep when the curing is done.

Maintenance

5.1 Recycling of Washing Liquid

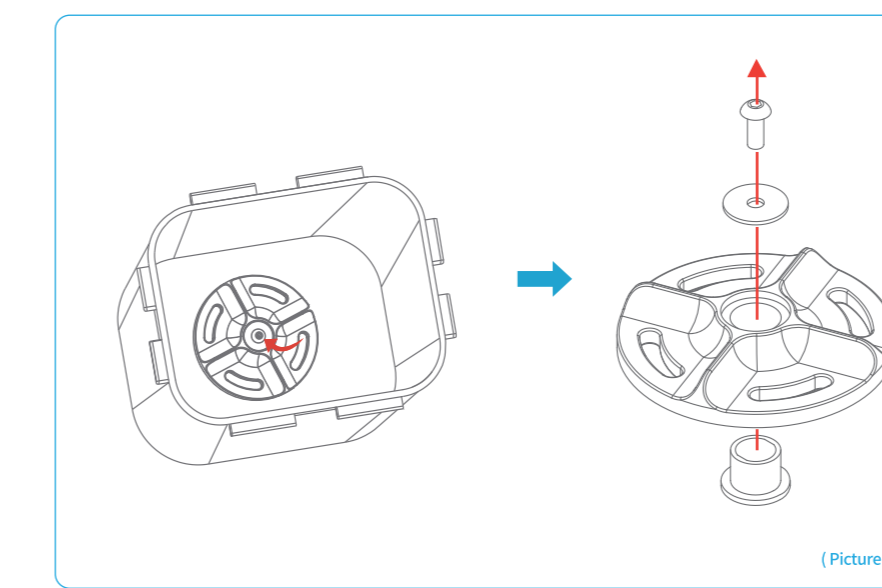
When the washing liquid in the bucket is reused for more than 30 times, we need to filter and clean the waste. First, leave the washing liquid to stand for about 10 hours, and then after the waste has settled to the bottom of the cleaning bucket, pour the washing liquid from the top of the bucket into another container, then clean the waste from the bottom of the bucket (the waste would be converted to ordinary solid waste in sunlight), if necessary, the bucket rotor can be removed for cleaning. (See Picture 5)



Maintenance

5.2 Cleaning the Rotor of the Cleaning Bucket

After a period of use, the bottom rotor of the cleaning bucket may rotate abnormally due to the precipitation, at which point the rotor can be removed for cleaning. (See Picture 6)



FAQ

1. The machine does not work

- The anti-UV lid is not covered. Try again after cover the lid.
- Poor power contact. Pull out the power cord and plug it in again.

2. The model turn white after washing and curing

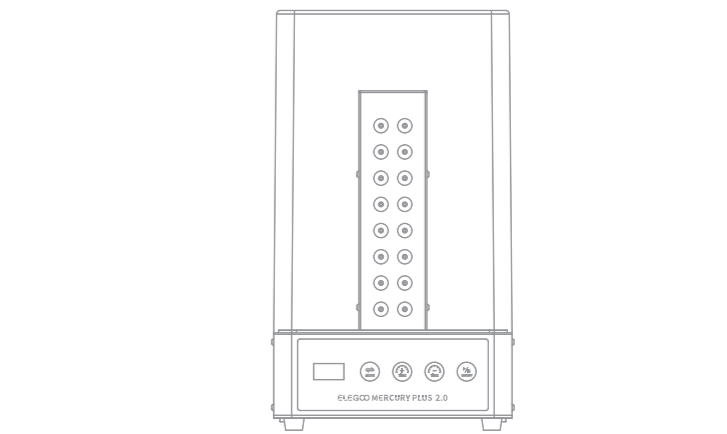
- Insufficient alcohol concentration. Please use a concentration of alcohol greater than 95% for cleaning.
- Curing is performed immediately after the model is washed. It needs to wait for the model air dry before putting it into the machine for curing.

3. The bottom rotor of the cleaning bucket does not rotate in the washing mode.

- The rotor might be caught by foreign matters. Please try again after taking the cleaning bucket down, pouring out the washing liquid, and removing the foreign matters.
- There is too much precipitation in the washing liquid, please taking the cleaning bucket down first, and try again after cleaning the precipitation of the washing liquid or changing the washing liquid.

4. The cleaning bucket has abnormal sound during operation.

- The screw of the rotor is loose during the washing process. Please fix the screw to the rotor with tool.



Email Support Discussion Forums Help Articles

ELEGOO.COM

封底